

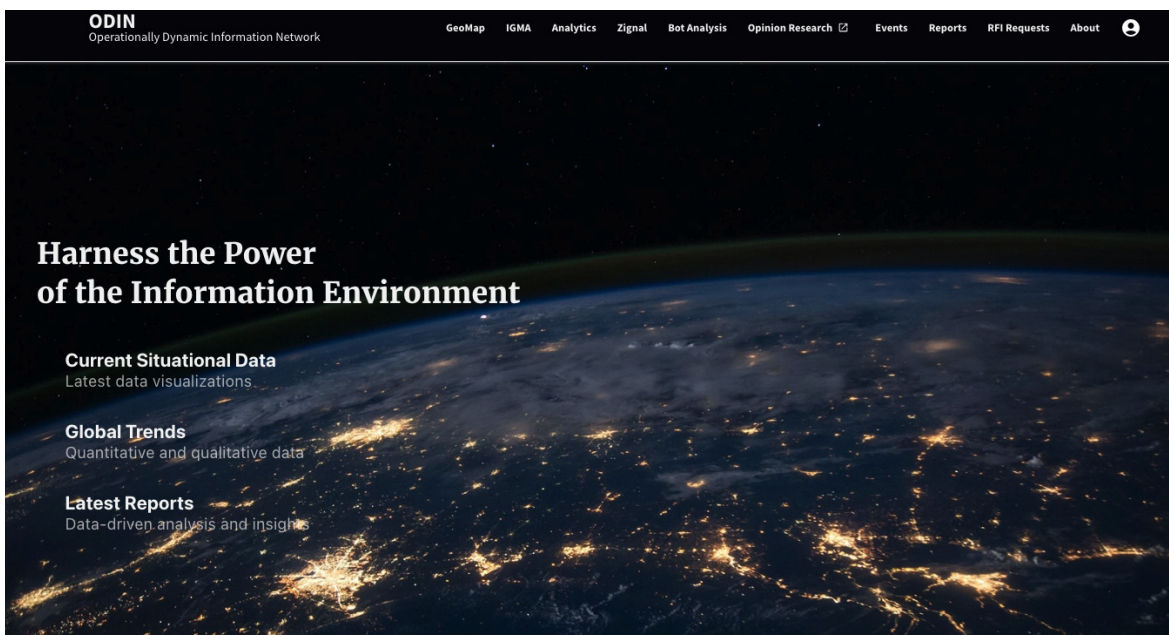
OPERATIONALLY DYNAMIC INFORMATION NETWORK

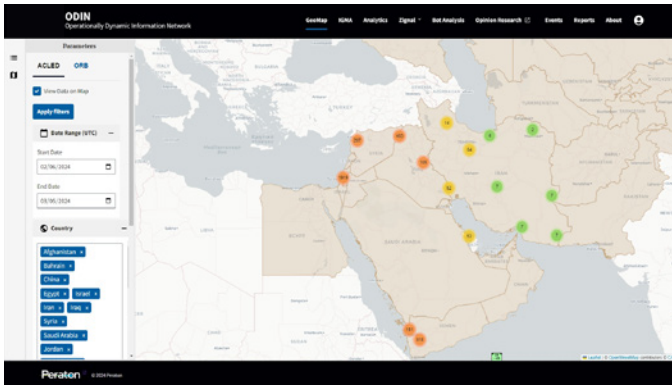
The Operationally Dynamic Information Network (ODIN) is a full-scope technical solution, intended to fuse AI-enabled analytic methods (e.g., machine learning, natural language processing, and large language models), social science research, intelligence and operational data, and human subject matter expertise into a single, cross-domain, cloud-based platform. ODIN's objective is to provide an empirically rigorous, comprehensive, and dynamically responsive understanding of the information environment (IE) in order to best inform plans, operations, and assessments. ODIN entails AWS and/or Azure GovCloud platforms with an intuitive, HTML user interface in an IL5 (CUI) and, soon, IL6 (SIPR) environments; a combination of Peraton Labs and unique vendor AI solutions; global field research networks with access to general and elite populations; and reach back and embedded analytic personnel to facilitate responsive support during both steady state and dynamic operations.

KEY FEATURES AND COMPONENTS

- GeoMap:** equips analysts with the ability to query an event in the area of responsibility (AOR) and filter the view to include battles, explosions/remote violence, protests, riots, strategic developments, and violence against civilians.
- Integrated Global Media Analysis (IGMA):** the IGMA tool provides near-real-time data ingestion and analysis including relevant regional media outlets. The advanced search bar leverages large language models (LLM) to summarize text and generate relevant responses to analytic queries reliably from the ODIN environment.

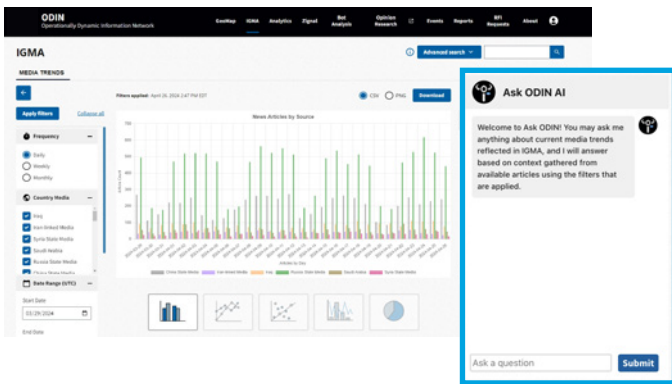
- Analytics:** analytics functionality includes: insights into user behavior (OS, browser, desktop, mobile, tablet, social media platforms, etc.), technology and connectivity data, socio-economic and financial data, global information and communication technology (ICT) trends, and market share.
- Signal:** provides custom-tailored dashboards that deliver continual tracking, at a global level, across all relevant platforms.
- Bot Analysis:** a list of week-over-week statistics of the trends of top accounts, with their associated message volume, within botnet active on X in associated countries.
- Opinion Research:** primary source opinion research includes opinion research business (ORB) research from countries of study.
- Events:** global events analysis provides longitudinal data for events spanning conflict to cooperation.
- Reports:** reporting and knowledge management includes easy access to analytic products that fuse data from across disparate sources to distill actionable insights.
- Request for Information:** allows users to ask the Peraton team for analytical reports, and include timelines for completion.





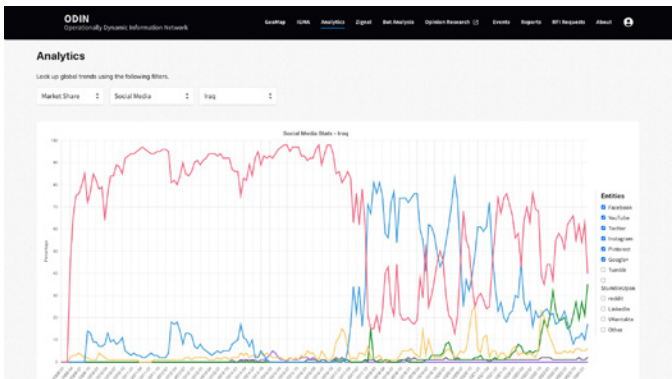
1. GeoMap

Analysts can use the GEOMap feature to query an event in the AOR and filter views to include: battles, explosions/remote violence, protests, riots, strategic developments, and violence against civilians. Users can shift the countries of focus and date ranges to accommodate research requirements. Data informs connections between other unique data sources and events in the IE.



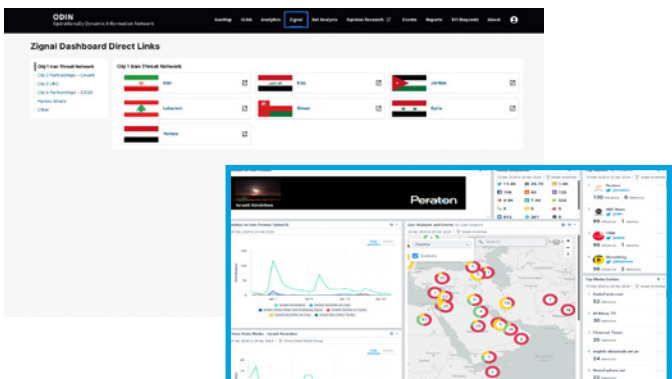
2. IGMA

IGMA provides data on sentiment and entity analysis from over 100+ languages. Analysts can use the advanced search bar. Ask ODIN AI, to find entities of interest, choose media outlets, dates, specific sentiment labels and themes. Analysts can also display data by volume, sentiment (or combination of the two), and export data as a CSV for additional analysis. Ask ODIN AI leverages LLM to summarize text and generate relevant responses to analytic queries reliably from the ODIN environment.



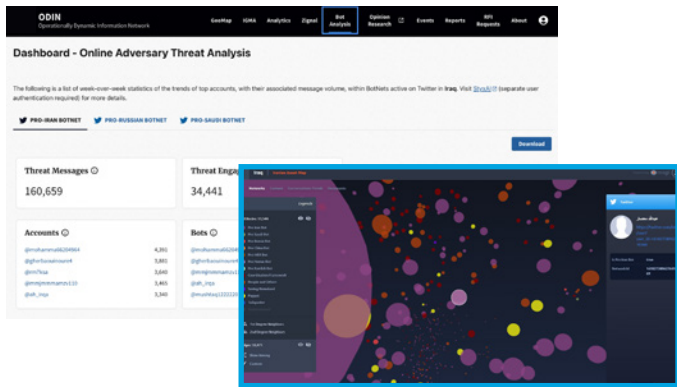
3. Analytics

The analytics section provides financial tracking for key companies of interest based on reported revenue. A variety of sources provide key indicators related to ICT development by country as well as supporting contextual data relating to national economic, media, and social conditions. The data includes levels of connectivity, media censorship, governance, and investment in relevant areas of technology.



4. Signal

Signal Labs provides dashboards that deliver continual tracking, at a global level, across all relevant platforms—this allows rapid assessment of global resonance of narratives. Insights surface key influencers for deeper analysis and social network analysis draws connections between users.



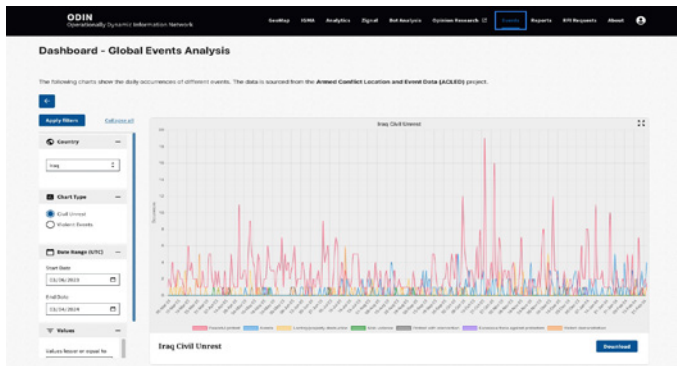
5. Bot Analysis

Updated botnet analytics include the top threat messages and engagers from each botnet identified. BotNet display data includes the top accounts, bots, and puppets identified for each group. Top accounts are the user, pages, or numbers for messaging apps, Bots are inauthentic users, and puppets are organic accounts that are amplified by botnets.



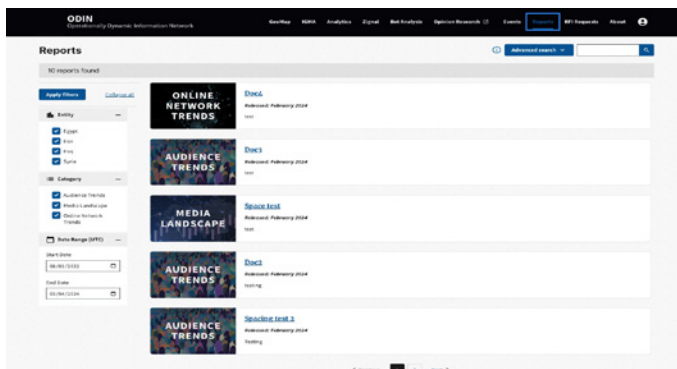
6. Opinion Research

Primary source opinion research includes ORB research from countries of study.



7. Events

Global events analysis provides longitudinal data for events spanning conflict to cooperation.



8. Reports

The reports section includes easy access to analytic products that fuse data from across disparate sources to distill actionable insights. Analysts can search for reports based on countries and categories of interest.

ODIN
Operational Data Center Information Network

New RFI Request

All fields are required.

RFI Subject *

Requesting Organization * Email Contact *

Date Required * Format *

mm/dd/yyyy [calendar icon] [dropdown icon]

Unclassified RFI *

Remaining characters: 1000

9. Requests for Information

RFI requests allows users to ask the Peraton team for analytical reports and include timelines for completion.

